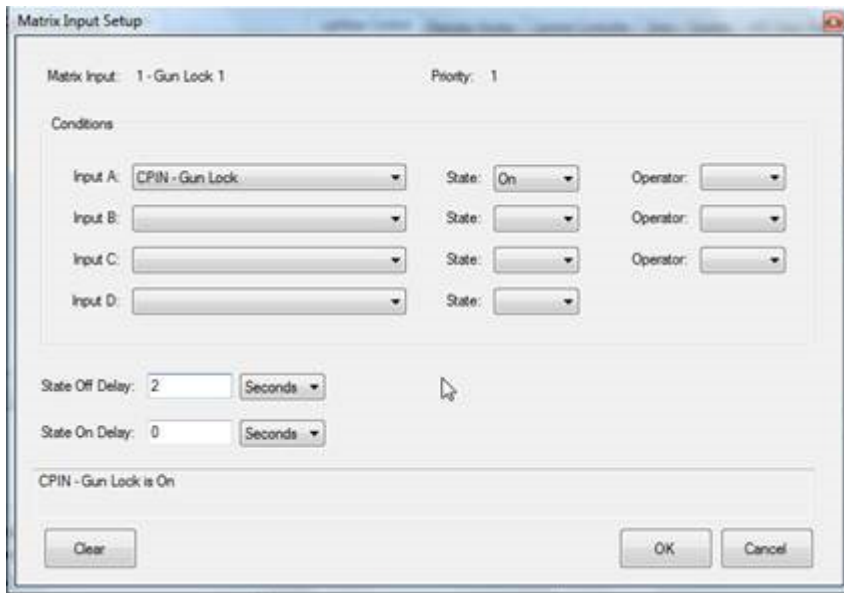


How to...

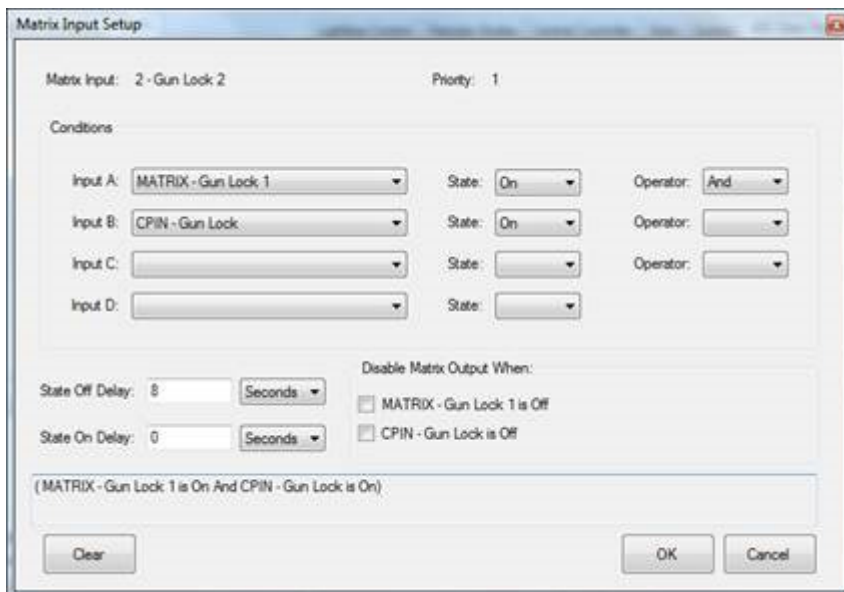
**Make a Gun Lock Release work off of a double press of the same button....**

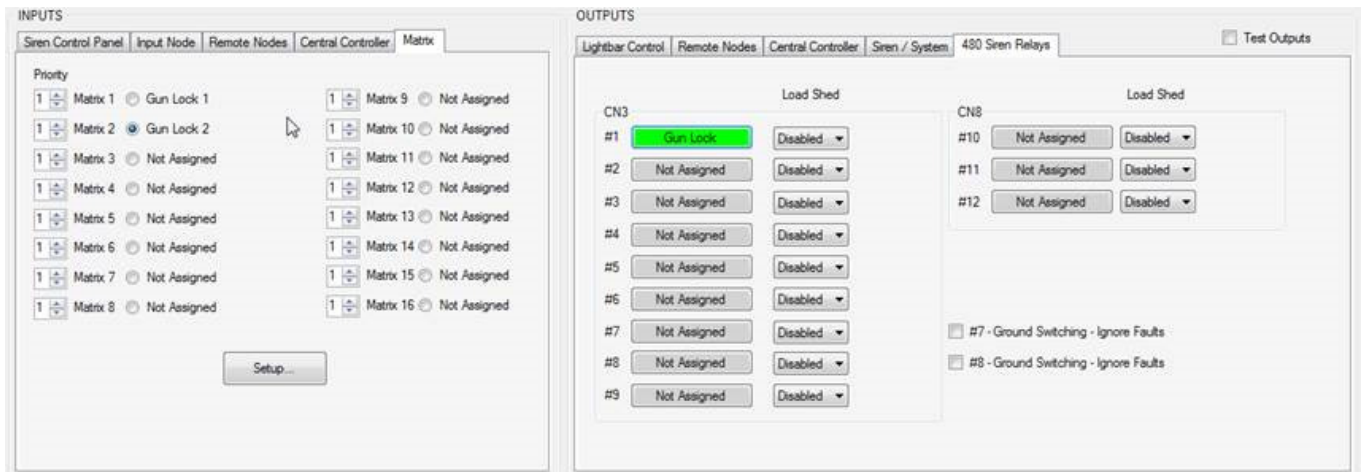
The following setup will allow Aux Button 8 on the siren control panel to have a momentary activation. Press it once and the first matrix engages, press it a second time within 2 seconds and the second matrix engages and the gun lock is released for 8 seconds.

Write a matrix that references Button 8 (or whatever the gun lock is) to activate with a delay off of 2 seconds. This matrix will not be mapped to any outputs.



Write a second matrix that can only activate if Button 8 is pressed again while the first matrix is active. Set a State Off Delay of [8] seconds. This delay will hold the gun lock open. Matrix 2 will be mapped to the Gun Lock release output.





You can always add more conditions for additional security.

Make sure you reprogram your control panel button to be momentary instead of the default 8 second delay or latched on/off.

### AUXILIARY SWITCH SETTINGS:

Refer to Figure at bottom center for Button and LED locations and terminology

1. Press and Hold Auxiliary Button #1 and #8 until slide switch #1 LED flashes.
2. Press the button which setting is going to be viewed/changed 1 time.
3. Monitor the 5 LED's for the arrow controller to determine setting
  - ⊙⊙⊙⊙⊙- \*Arrow Controller (Left, Right, Center, OFF), Dual Output; 1 & 9
  - ⊙⊙⊙⊙⊙- Alternate Action Switch (Press ON / Press OFF)
  - ⊙⊙⊙⊙⊙- Momentary Action Switch (ON only when depressed)
  - ⊙⊙⊙⊙⊙- 8 Second ON Time (ON for 8 seconds when depressed)
  - ⊙⊙⊙⊙⊙- Level 1 Disable (Turns OFF Level 1 Output)
  - ⊙⊙⊙⊙⊙- Level 2 Disable (Turns OFF Level 2 Output)
  - ⊙⊙⊙⊙⊙- Left Arrow, Single Output
  - ⊙⊙⊙⊙⊙- Right Arrow, Single Output
  - ⊙⊙⊙⊙⊙- Center Arrow, Single Output
  - ⊙⊙⊙⊙⊙- Warning Bar Output

\*Can only be programmed to one button and will disable Left, Right and Center Arrow Single Outputs if they are used.

4. Press and release button until desired mode is selected.
5. Continue steps 2-3 for any other buttons that need to be programmed.

### Default Settings:

Button #1: Arrow Controller  
 Button #2-7: Alternate Action Switch  
 Button #8: 8 Second ON Time

Denotes Factory Default Setting