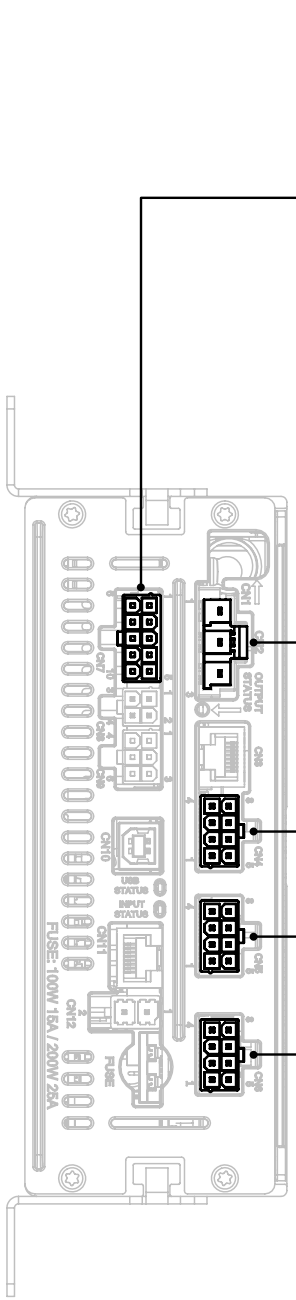


Department	_____
Vehicle	_____
Date	_____



### CN7 - Input Plug

Orange/Black	Pin #1	Ignition Input	_____
Blue	Pin #2	Input #1 <input type="checkbox"/> High <input type="checkbox"/> Low	_____
Lt. Blue	Pin #3	Input #2 <input type="checkbox"/> High <input type="checkbox"/> Low	_____
Violet	Pin #4	Input #3 <input type="checkbox"/> High <input type="checkbox"/> Low <input type="checkbox"/> PWM	_____
Brown	Pin #5	Input #4 <input type="checkbox"/> High <input type="checkbox"/> Low <input type="checkbox"/> PWM	_____
Grey	Pin #6	Input #5 <input type="checkbox"/> High <input type="checkbox"/> Low <input type="checkbox"/> PWM	_____
White	Pin #7	Input #6 <input type="checkbox"/> High <input type="checkbox"/> Low <input type="checkbox"/> PWM	_____
Green	Pin #8	Input #7 <input type="checkbox"/> High <input type="checkbox"/> Low	_____
Pink	Pin #9	Input #8 <input type="checkbox"/> High <input type="checkbox"/> Low	_____
Yellow	Pin #10	bluePRINT LIN Channel	_____

### CN2 - Output Plug (Slide Relays)

Blue	Pin #1	Relay - Slide 1 - 20A	_____
Green	Pin #2	Relay - Slide 2 - 20A	_____
Yellow	Pin #3	Relay - Slide 3 - 20A	_____

### CN4 - Output Plug (Horn Cut, Lightbar #2, & Outputs 11-15)

Green/Black	Pin #1	Horn Cut Output	_____
Green/White	Pin #2	Horn Cut Input	_____
Green	Pin #3	Lightbar Bus Channel 2	_____
White	Pin #4	Output 15 - 5A	_____
Orange	Pin #8	Output 14 - 10A	_____
Yellow	Pin #7	Output 13 - 5A <input type="checkbox"/>	_____
Brown	Pin #6	Output 12 - 10A <input type="checkbox"/>	_____
Blue	Pin #5	Output 11 - 5A <input type="checkbox"/>	_____

### CN5 - Output Plug (Relay #2, Outputs 6-10)

Green/Black	Pin #1	Relay #2 NO Output	_____
Green/White	Pin #2	Relay #2 NC Output	_____
Green	Pin #3	Relay #2 External Input	_____
White	Pin #4	Output 10 - 5A	_____
Orange	Pin #8	Output 9 - 10A	_____
Yellow	Pin #7	Output 8 - 5A <input type="checkbox"/>	_____
Brown	Pin #6	Output 7 - 10A <input type="checkbox"/>	_____
Blue	Pin #5	Output 6 - 5A <input type="checkbox"/>	_____

### CN6 - Output Plug (Relay #1, Outputs 1-5)

Green/Black	Pin #1	Relay #1 NO Output	_____
Green/White	Pin #2	Relay #1 NC Output	_____
Green	Pin #3	Relay #1 External Input	_____
White	Pin #4	Output 5 - 5A	_____
Orange	Pin #8	Output 4 - 10A	_____
Yellow	Pin #7	Output 3 - 5A <input type="checkbox"/>	_____
Brown	Pin #6	Output 2 - 10A <input type="checkbox"/>	_____
Blue	Pin #5	Output 1 - 5A <input type="checkbox"/>	_____

◆ = In-Rush (Startup Surge)  
▶ = Diode Isolated